

Multi-Purpose, High Speed Centrifuge  
**1248R/1580R**  
**User's Manual**



**GENESPEED®**

**Manufacturer: Baygene Company Limited**

4th Floor, Area B, Building 1, No. 505 ZiYue Road, Minhang District, Shanghai

Tel:(021)-6728-5083 Fax:(021)-6420-5380

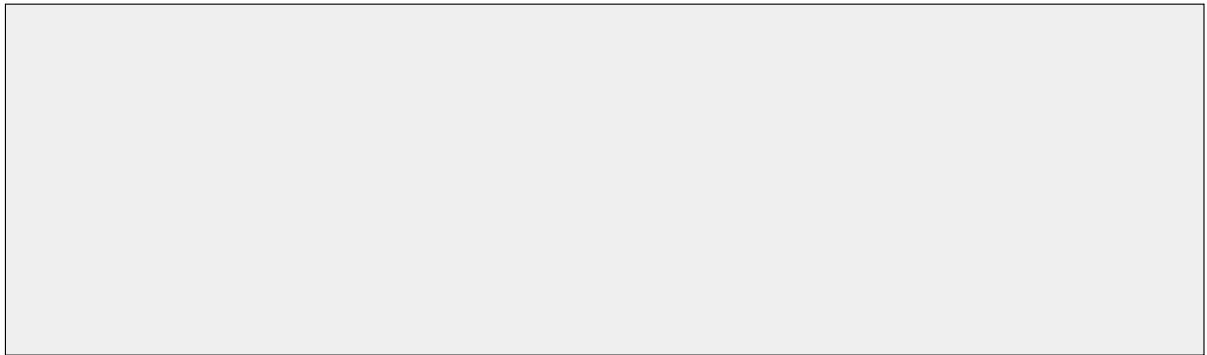
---

---



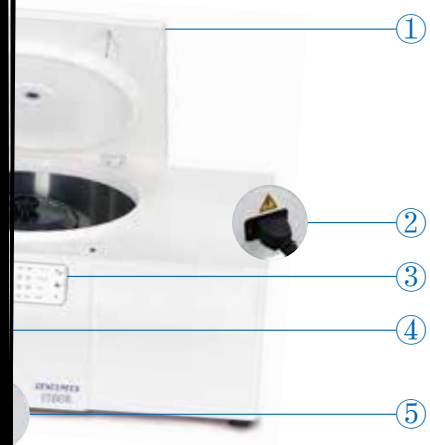
## Content







## 2 Product Description & Technical Information



### 3 Display & Control Panel






This instrument has following functions for safety.2.



## 4. Installation

### 4-1. Power On/Off and Lid Release

Action

#### 4-1-1. Power On/Off

▶



▶

▶



#### 4-1-2. Lid Release

▶

▶

▶



The lid is not opened while the instrument is running.  
 If the lid is opened, the instrument could not be operated even with pressing the [START] button.

For operational safety, this instrument has the automatic rotor recognition function.  
 When you supply the power, "Rotor Scan..." will be appeared. If the rotor is absent, the "Error 9" will be appeared. This message will be cleared after rotor coupling and running.



## 4-2. Rotor Coupling and Disassembling

Action

---

### 4-2-1. Swing-Out Rotor

- ▶
- ▶
- ▶
- ▶



### 4-2-2. Fixed Angle Rotor





## 4-3. Positioning of Sample Tubes

Action

- ▶
- ▶

Correct Way of Sample Balancing and Tube Usage

!

9,000 xg ?  
8,000 xg ?  
10,000 xg ?  
1,000 xg

Check the g-force of sample containers!

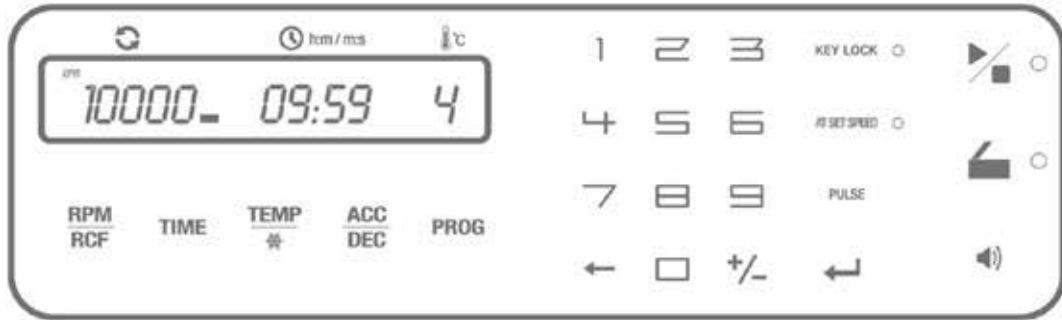
✓ If the number of samples is not in pair, please load the control tubes at each symmetrical position. Otherwise, it results noise and vibration, which eventually damage the instrument





# 5. Operation

## 5-1. Key Functions of Control Panel






## 5-2. Setting the RPM/RCF Value

### Action

#### 5-2-1. Setting the RPM Value

- ▶
- ▶
- ▶
- ▶
- ▶
- ▶
- ▶
- ▶



## 5-3. Setting the Time Value

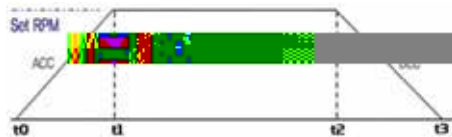
### Action

#### 5-3-1. Setting the AT SET SPEED mode



#### AT SET SPEED Mode

For exact time control, this instrument can be set with AT SET SPEED mode which counts the run time once the actual run speed reaches to the set speed value and stops when the deceleration begins.



\*[AT SET SPEED] lamp turns on: From t1 to t2

\*[AT SET SPEED] lamp turns off: From t0 to t2



### 5-3-2. Setting the 'MIN/ HOUR' Value



Action

---



### 5-4. Setting Temperature and Fast Cool

Action

---

#### 5-4-1. Setting Temperature





## 5-5. Acceleration / Deceleration

Action

---



## 5-6. Program Saving & Recalling

Action

---

## 5-7. Start/Stop

Action

---



## 5-8. Repeat Account and Sound Pitch of End Alarm

### Action

---

#### 5-8-1. Setting the Sound Pitch of End Alarm



#### 5-8-2. Setting the Repeat Count of End Alarm



## 5-9. Pulse

### Action

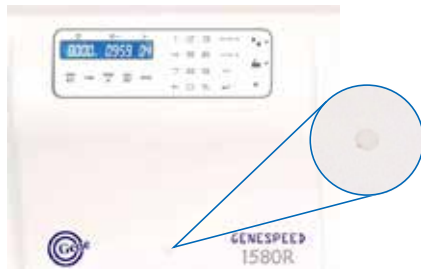
---



## 5-10. Emergency Lid-Lock Release

### Action

---



Manual opening should be performed only when spinning is completely stopped. Otherwise, harmful damage will be accompanied to not only operators but samples. After opening the lid manually, it is recommended to wait until normal electricity comes back.

## 6. Maintenance

### 6-1. Outer part of Instrument



### 6-2. Chamber

### 6-3. Shaft

### 6-4. Rotor





6-5. Transportation of Instrument

**7. Trouble Shooting**

7-1. Check List


7-2. Error Code



Error	Possible Causes	Actions



Error	Possible Causes	Actions

